

/storage/emulated/0/Android/data/com.jsoftware.j.android/files/bin/profilex.ijs

Guides/JAndroid

< [Guides](#)

Contents

Install and Upgrade

JKeyboard

SystemFolders

File permission

Location of Shared Libraries

Startup Files

Jconsole

Async Mode

Force Update

Limitation

Known issues

Install and Upgrade

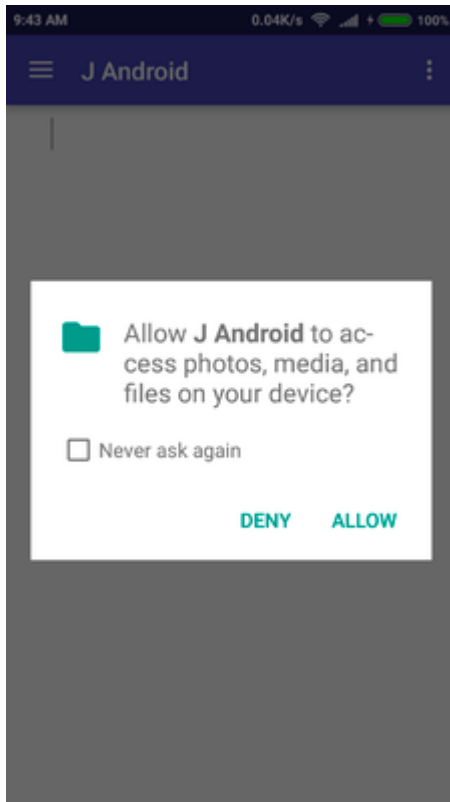
Before installation, enable *Unknown Sources* if not yet done.

To access the *Unknown Sources* setting directly, press the menu icon or button from the Home screen and tap *Settings*. Select *Security* (Android OS 4.0+) or *Applications* (Android OS 3.0 and earlier).

You may need to scroll down to see the *Unknown Sources* setting.

Open a web browser to download and install [jandroid.apk](http://www.jsoftware.com/download/j901/install/jandroid.apk) (<http://www.jsoftware.com/download/j901/install/jandroid.apk>) on your Android device. A blue J icon labeled jandroid will appear in launcher screen if installed successfully. The first run will take about 1 minute to decompress files. After installation process has completed, tap on **Back Button** to finish install.

On Android 6 or newer, storage permission must be granted otherwise J Android cannot work properly.



JKeyboard

This is the *JKeyboard* from Michael Dykman. Go to *Settings >> Language & Input* to activate *JKeyboard*. We do not collect your data. Finally scroll up and select *JKeyboard* in the *default* box.

SystemFolders

`$EXTERNAL_STORAGE` is the path of the emulated sdcard folder which is usually `/storage/emulated/0`,

```

~install  $EXTERNAL_STORAGE/Android/data/com.jssoftware.j.android/files
~bin      /data/data/com.jssoftware.j.android/app_jandroid/bin
~system   ~install/system
~addons   ~install/addons
~user     $EXTERNAL_STORAGE/j901-user
~home     $EXTERNAL_STORAGE
  
```

other folders will be under `~user`

```

~break
~config
~projects
~snap
~temp
  
```

`~break` is empty and will not be used.

Upon uninstall, all files under `~install` will be removed by Android.

File permission

Prior to Android 6 (except Kitkat), files on emulated sdcard and sdcard (except some special folders) are public and can be read and written by all users/apps. Explicit storage permission is required on Android 6 or newer are required for J Android to work properly.

Files under `/data/data/{android apps}` are owned by the respective apps, and not accessible by other Android apps such as text editor, image viewer.

Location of Shared Libraries

Startup Files

```

┌-install/bin/profile.ijs
└-install/bin/profilex.ijs      NB. if present
└home/.jprofile.ijs           NB. if present
└-install/bin/startup_android.ijs  NB. if present

```

profilex.ijs is typically used for setting up system folders. Other customization can be put in either .jprofile.ijs .

Jconsole

Command line frontend `jconsole` or `jconsole-nopie` executable is available with full path name under

```

┌jpath '~bin../libexec
└or
└/data/data/com.jssoftware.j.android/app_jandroid/libexec

```

Its file permission is 755. There is no visible icon for jconsole on Android screen.

It can be called from J using `2! : 0` or `2! : 1` in a non-interactive mode.

Certain Android Apps such as Shell and Terminal Emulator can run jconsole in an interactive mode.

Async Mode

By default jandroid runs in sync mode but it can also run in async mode where J engine runs in separate thread. The following features requires async mode

- console keyboard input of `1! : 1 [1` and *explicit definition*
- debug and suspension (GUI debug not supported)

Use `wd` command to switch between sync and async mode,

```

┌wd 'setj asyncj 0'    NB. sync
└wd 'setj asyncj 1'    NB. async

```

and restart J to take effect.

Force Update

The Android APK file contains system base library and some addons. Whenever jandroid starts, it will check the version number stored in

```
~install/assets_version.txt
```

to determine if it needs to decompress and overwriting files. If you want to decompress files again, type

```
dver ''
```

and restart J, and then quit again to finish install.

jandroid will switch back to the default sync mode.

Limitation

- printing not yet supported
- keyboard shortcut is not supported
- some addons such as FFTW do not work because of missing shared libraries.

Known issues

- when jandroid has been killed by Android after a long in-activity period, jandroid can not restart and will crash.

Contributed by [Bill Lam](#)

Retrieved from "<https://code.jssoftware.com/mediawiki/index.php?title=Guides/JAndroid&oldid=27571>"

This page was last edited on 21 December 2019, at 07:34.